

Mercer County Extension Office
1007 Lexington Road
Harrodsburg, KY 40330

RETURN SERVICE REQUESTED

NONPROFIT ORG
US POSTAGE PAID
HARRODSBURG, KY
PERMIT #72

Agriculture Natural Resources Newsletter September, 2024

Cooperative Extension Service
Mercer County
1007 Lexington Road
Harrodsburg, KY 40330
(859) 734-4378 Fax: (859) 734-4379
mercerc.ca.uky.edu



Patriot Day

Patriot Day, on September 11th, honors the memory of the nearly 3,000 innocent victims who died in the September 11, 2001, terrorist attacks. Each year, Americans dedicate this day to remembering those who died and the first responders who risked their own lives to save others.



Linda McClanahan
Linda McClanahan
Mercer County Extension Agent for ANR



- September 3 Central KY Master Cattlemen program begins
- September 5 Fort Harrod Backcountry Horsemen Meeting, 7pm
- September 5 UK Horses & Horsemen: Farm & Facilities Expo, River Mountain Farm 4-8pm
- September 9 Mercer County Agriculture Development Council Meeting, 6pm
- September 12 Rinse & Return Program at Mercer County Recycling Center, 1-3pm
- September 12 Mercer County Agriculture Field Day, Stephen Goodlett Farm
- September 15-21 National Farm Safety & Health Week
- September 19 Mercer County Agriculture Field Day Rain Date
- September 28-29 Harvest Fest, Shaker Village
- September 23 BQCA Training, 10am OR 6pm

- October 2 Central KY Hay Contest Entry Deadline
- October 3 Fort Harrod Backcountry Horsemen Meeting, 7 PM
- October 15-17 Heart of America Grazing Conference, Hardin County Extension Office
- October 24 KY Beef Conference, Fayette County Extension Office
- October 24 Mercer County Extension Council Meeting, 6 PM

Dates to Remember

**Cooperative
Extension Service**

Agriculture and Natural Resources
Family and Consumer Sciences
4-H Youth Development
Community and Economic Development

MARTIN-GATTON COLLEGE OF AGRICULTURE, FOOD AND ENVIRONMENT

Educational programs of Kentucky Cooperative Extension serve all people regardless of economic or social status and will not discriminate on the basis of race, color, ethnic origin, national origin, creed, religion, political belief, sex, sexual orientation, gender identity, gender expression, pregnancy, marital status, genetic information, age, veteran status, physical or mental disability or reprisal or retaliation for prior civil rights activity. Reasonable accommodation of disability may be available with prior notice. Program information may be made available in languages other than English. University of Kentucky, Kentucky State University, U.S. Department of Agriculture, and Kentucky Counties, Cooperating. Lexington, KY 40506



SHAKER VILLAGE

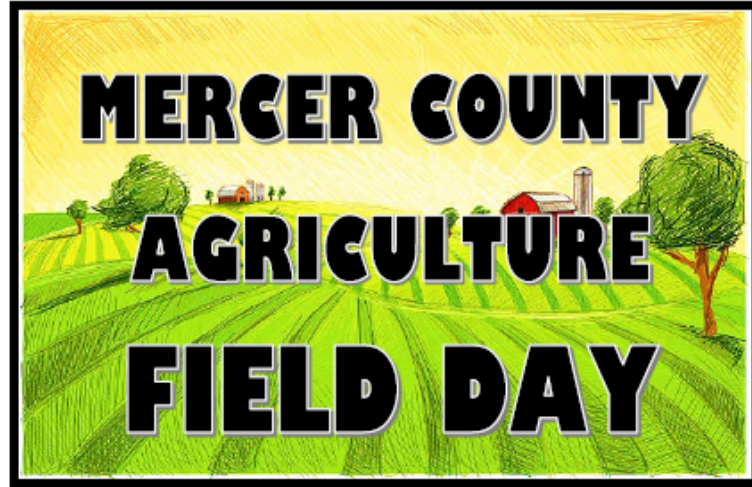
Fall HARVEST FESTIVAL

VOLUNTEERS NEEDED

TO ASSIST WITH MERCER COUNTY COOPERATIVE EXTENSION BOOTH
INCLUDES WORKING FUN INTERACTIVE GAME STATIONS
VOLUNTEERS WILL RECEIVE FREE ADMISSION TO FESTIVAL

September 28-29, 2024
Shaker Village
Festival will run from 10:00am - 4:00pm
Volunteer times are 3 hours

For more information or to volunteer
<https://bit.ly/Extensionharvest24>
Mercer County Cooperative Extension - 859-734-4378



Thursday, September 12

Goodlett Farms

510 McAfee Lane, Harrodsburg

5:00 PM—Registration begins

5:00 PM—Visit Vendor Area

5:30 PM—Program and Tour begin

**Free sponsored meal prepared by
Mercer County Cattlemen’s Association**

**Rain Date – September 19th*

SPEAKERS

Small Farm Grant Opportunities
Joni Nelson, KSU Extension Associate

Raising Hope
Dr. Cheryl Witt, UK Ag Extension Specialist Senior

Tractor Safety
Dale Dobson, KDA Safety Administrator

Soybean Diseases
Dr. Carl Bradley, UK Extension Plant Pathologist

**Cooperative
Extension Service**

Agriculture and Natural Resources
Family and Consumer Sciences
4-H Youth Development
Community and Economic Development

MARTIN-GATTON COLLEGE OF AGRICULTURE, FOOD AND ENVIRONMENT

Educational programs of Kentucky Cooperative Extension serve all people regardless of economic or social status and will not discriminate on the basis of race, color, ethnic origin, national origin, creed, religion, political belief, sex, sexual orientation, gender identity, gender expression, pregnancy, marital status, genetic information, age, veteran status, physical or mental disability or reprisal or retaliation for prior civil rights activity. Reasonable accommodation of disability may be available with prior notice. Program information may be made available in languages other than English.
University of Kentucky, Kentucky State University, U.S. Department of Agriculture, and Kentucky Counties, Cooperating.
Lexington, KY 40506



COOPERATIVE EXTENSION



We invite all farmers (full, part time & hobby), agriculture businesses, and anyone with an interest in agricultural production to come out and take part in this educational field day.

This will meet the CAIP educational requirement.

Enjoy some shade, cool drinks, & good food for all. In addition, several agricultural businesses will have displays in the vendor area.

For more information, contact:

Mercer County Farm Bureau
859-734-4341

Mercer Co Conservation District
859-734-4326 ext 3

Mercer Co Extension Service
859-734-4378

RSVP

**Please call 859-734-4378
to register
by September 10th.
It is important that we know how
many are planning to attend.
THANK YOU!**

Field Day Sponsors

**Mercer County Farm Bureau Federation
Mercer County Conservation District
Mercer County Cooperative Extension Service
Central KY Ag Credit
Farm Credit Mid-America**

2024 Kentucky Intermediate Grazing School

Helping livestock producers improve profitability with classroom and hands-on learning

When: September 25-26, 2024

Where: Woodford County Extension Office
184 Beasley Drive, Versailles, KY 40383

Cost: \$60/Participant – includes all materials, grazing manual, grazing stick, morning refreshments, and lunch both days

Program Registration: DEADLINE is September 20, 2024

Online Registration with CREDIT CARD AT:
<https://2024FallGrazingSchool.eventbrite.com>

Registration by U.S. Mail with CHECK:



Caroline Roper
UK Research and Education Center
PO Box 469, Princeton, KY 42445

Name: _____

Street: _____

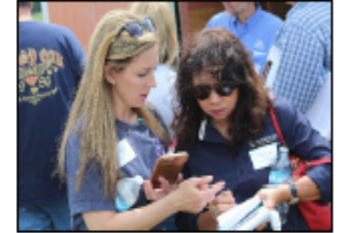
City: _____

State: _____ Zip Code: _____

Cell Phone: _____

Email: _____

Number of participants _____ x \$60 per participant = _____ Total Amount



Please make checks payable to KFGC



UK Martin-Gatton
College of Agriculture,
Food and Environment
University of Kentucky.

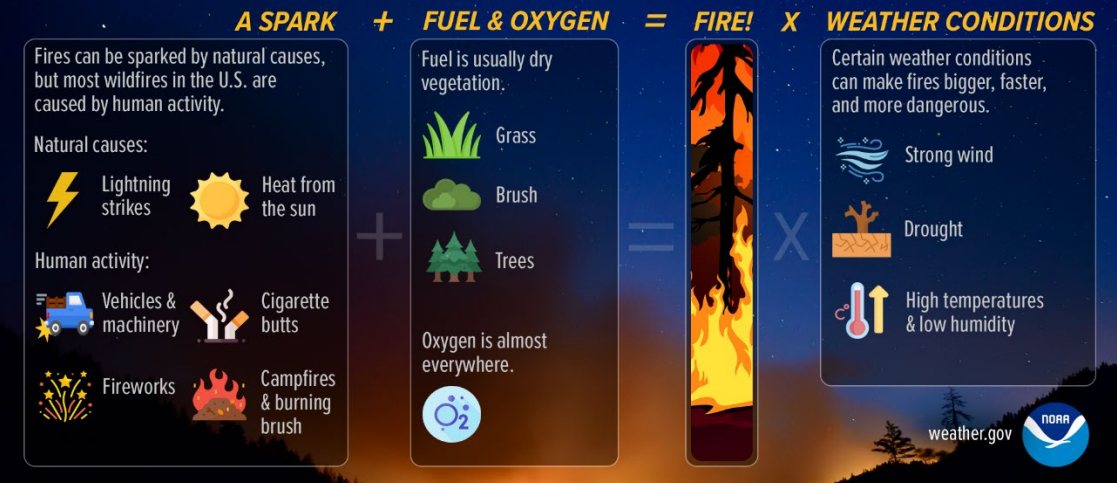
**Kentucky Master Grazer
Educational Program**

KADF
KENTUCKY AGRICULTURAL
DEVELOPMENT FUND

Wildfires and Weather: A Potentially Deadly Combination

What Causes Wildfires?

A spark, in the presence of fuel and oxygen, can cause a fire, which can further spread depending on various weather conditions.



Tony Edwards - National Weather Service Charleston, WV

Wildland forest fires are fairly common across the Commonwealth, but especially so in the forests of eastern Kentucky. The Kentucky Division of Forestry reports that, on average, there are over 1,400 wildfires each year across Kentucky. Arson is the number one cause of those fires, with uncontrolled burning ranking second. Ninety-nine percent of all wildfires in Kentucky are caused by humans!



The 2021 data for the U.S. Bureau of Labor Statistics indicates that the agricultural sector is still the most dangerous in America with 453 fatalities. Fall harvest time can be one of the busiest and most dangerous seasons of the year for the agriculture industry. For this reason, the third week of September has been recognized as National Farm Safety and Health Week. This annual promotion initiated by the National Safety Council has been proclaimed as such by each sitting U.S. President since Franklin D. Roosevelt in 1944. National Farm Safety and Health Week is led by the National Education Center for Agricultural Safety (NECAS), the

agricultural partner of the National Safety Council. AgriSafe is hosting webinars each weekday of NFSHW24. You're invited to join in for all of them or just pick the ones that interest you most. Thanks to our generous sponsors, these webinars are **FREE** and open to the public.

Register: <https://www.eventbrite.com/e/national-farm-safety-and-health-week-tickets-909891188037?aff=oddttdcreator>

Monday, September 16: Equipment and Rural Roadway Safety

Tuesday, September 17: Health and Wellness

Wednesday, September 18: Generations of Farming

Thursday, September 19: Confined Space

Friday, September 20: Reporting Ag Injuries

Many of us have seen what look like harmless fires burning in the leaf litter in our forests during the dry fall and spring seasons. Some of us may have even been responsible for a burn pile or two getting "out of control". These situations shouldn't be taken lightly, however, as given the right conditions, these fires can become deadly.

On April 6, 1999, rapidly changing weather conditions and steep terrain combined on a wildfire (named the Island Fork Fire) in Rowan County, resulting in the death of two volunteer firefighters, ages 28 and 30. These firefighters were overrun by the wildfire which likely started when a landowner lost control of a fire while clearing a fence line. The wildfire advanced quickly up the steep terrain, with flames as high as 20 feet and winds increasing rapidly to over 35 mph! Char marks on the tree bark were up to 50 feet high! While such fire conditions are rare in Kentucky, they illustrate how dangerous wildfires can be and why you should take measures to prevent them from occurring.

The National Weather Service issues Red Flag Watches and Red Flag Warnings to inform fire management agencies and the public when weather conditions are right for rapid wildfire growth. A **Red Flag Watch** means to be prepared as dangerous fire weather conditions are possible in the next few days but are not occurring yet. A **Red Flag Warning** means dangerous fire weather conditions are occurring now or are expected to occur shortly. During a Red Flag Warning, you should use extreme caution when dealing with anything that could pose a wildfire hazard.

When fire danger is elevated, you may see a burn ban go into effect. Usually these are on a local county level, and are enforced with assistance from local law enforcement. Burn bans generally prohibit burning of forest, grass, crops, woodlands, marshes and other similar areas. Make sure to check with your local fire department or county officials before burning.

FIRE WEATHER WATCH

A Fire Weather Watch is issued when **critical fire weather conditions are possible.**

"Critical fire conditions" means warm temperatures, low humidity, and strong, gusty winds.

Be Prepared.

RED FLAG WARNING

A Red Flag Warning is issued when **critical fire weather conditions are happening or are about to happen.**

Avoid burning, be careful around open flames, safely dispose of cigarettes. Fires can spark and grow very quickly.

Take Action!

weather.gov NOAA

Keep in mind that during fire seasons in Kentucky, it is illegal to burn anything within 150 feet of any woodland or brushland between the hours of 6 a.m. and 6 p.m. The **Spring Forest Fire Season runs from February 15 - April 30** and the **Fall Forest Fire Season runs from October 1 - December 15.** Violation of the burn ban is a misdemeanor punishable by law!

Rinse and Return Recycling Program September 12th, 1-3 PM, Mercer County Recycling Center

Pressure Rinsing

1)Remove cover from container. Empty the pesticide into the spray tank and let the container drain for 30 seconds. 2)Continue holding the container upside down over the sprayer tank opening so rinsate will run into the sprayer tank. 3)Insert the pressure-rinse nozzle by puncturing through the bottom of the pesticide container. 4)Rinse for length of time recommended by the manufacturer, generally 30 seconds or more.

Triple Rinsing

1)Remove cover from container. Empty the pesticide into the spray tank and let the container drain for 30 seconds. 2)Fill the container 10% to 20% full of water or rinse solution. 3)Secure the cover on the container. 4)Swirl the container to rinse all inside surfaces. 5)Remove cover from the container. Add the rinsate from the container to sprayer tank and let drain for 30 seconds or more. 6)Repeat steps 2 through 5 two more times. 7)Puncture container.



RECIPE



Potato Broccoli Soup

| | | |
|---|--------------------------|---|
| 4 cups cubed potatoes | 3 cups 2% milk | 2 green onions, finely minced, divided |
| 2 heads broccoli, (3-4 cups florets) | ¼ teaspoon salt | ½ cup reduced-fat sour cream |
| 2 tablespoons olive oil | ½ teaspoon pepper | 5 ounces cheddar cheese, reduced-fat, shredded |
| ¼ cup all-purpose flour | | ¼ cup bacon bits (optional) |
| ½ cup melted butter | | |

Preheat oven to 375 degrees F. **Place** potatoes in large saucepan, **cover** with water and bring to a boil. **Reduce** heat and **cook** potatoes until tender, about 15 minutes. **Cut** broccoli heads into small florets and **place** on baking tray. **Drizzle** with olive oil and **roast** for 15 minutes. **Drain** cooked potatoes in a colander. In the saucepan, **combine** the flour and melted butter; **cook** on medium heat for 1 minute. Slowly **add** milk to the mixture, stirring constantly until thickened. Soup can be thinned by adding an additional

½ cup of milk or water, if desired. **Add** the potatoes, broccoli, salt, pepper, cheese, half of the green onions and bacon bits. **Cook** on low until heated. A few minutes before serving, **add** the sour cream and **stir** to combine. **Serve** topped with remaining onions.

Yield: 6, 1¼ cup servings

Nutritional Analysis: 390 calories, 24 g fat, 13 g saturated fat, 60 mg cholesterol, 370 mg sodium, 30 g carbohydrate, 3 g fiber, 9 g sugars, 15 g protein.



BQCA Trainings
Monday, September 23rd, 10am OR 6pm
Mercer County Extension Office RSVP required

What is Beef Quality and Care Assurance?

The Kentucky Beef Quality & Care Assurance (BQCA) Program is based on recommended national guidelines and scientific research. This program enables beef and dairy producers to enhance their product, maximize marketability and strengthen consumer confidence. Kentucky Beef Quality and Care Assurance takes national BQA practices one step further to provide the best program for Kentucky producers. The BQCA program adds a cattle handling and care component to the training model. Educational modules provide the best management practices for handling cattle and providing their well-being, while also training on the core principles of BQCA.



September is National Preparedness Month

Launched in 2004, National Preparedness Month (NPM) is FEMA's national annual preparedness outreach. The Ready Campaign, in conjunction with the Ad Council, aims to educate and empower Americans during NPM and throughout the year to prepare for and respond to all types of emergencies, including natural disasters and potential terrorist attacks. National Preparedness Month culminates on September 30th with National Preparedness Day, the national day of action.

Call to Action

- **Learn your risks & responses – be informed.**
 - Emergency Alerts – You can receive important lifesaving alerts no matter where you are – home, school or work – UK Weather Alert App, NOAA Weather Radio, Wireless Emergency Alerts
 - Natural Disasters – Know which natural disasters can occur in your area and how to prepare and stay safe.
 - Shelter & Evacuation – Make sure you know where the nearest shelters are, as well as the appropriate evacuation routes/plans for specific situations.
- **Assess your needs.** If you have medications that need refrigeration, rely on mobility or assistive devices or have a pet you'll need to understand how these variables will factor into what you'll need to stay safe in a disaster or emergency.
- **Make a plan.** Once you assess your needs, you can tailor your plans to make sure your needs are met. This can include building a kit that includes extra medication, having a way to store medications in an emergency and planning for your pets or service animals.
- **Build a supply kit.** You need to make sure you and your family have the necessary food and supplies to sustain you until the power returns or help arrives. It is also important to keep the kit maintained by keeping food/water fresh and supplies working properly. It is typically best to store the kit in a closet or basement.
- **Engage your support network.** Reaching out to family, friends and neighbors can help you build a support network that can support you before, during and after a disaster or emergency. Share each aspect of your emergency plan with everyone in your group, including a friend or relative in another area who would not be impacted by the same emergency who can help if necessary. Make sure everyone knows how you plan to evacuate your home or workplace and where you will go in case of a disaster. Make sure that someone in your personal support network has an extra key to your home and knows where you keep your emergency supplies. Practice your plan with those who have agreed to be part of your personal support network.

• **MERCER COUNTY WASTE TIRE COLLECTION**

- Thursday, Sept 19th, 2024 8am-4pm
 - Friday, Sept 20th, 2024 8am-4pm
 - Saturday, Sept 21st, 2024 8am-11:30am
 - *Tires will be accepted on or off rim: truck, light truck, passenger, implement, lawn tractor, bicycle, motorcycle, golf cart, etc.
 - TIRES NOT ACCEPTED: foam filled, calcium filled, off road construction, rubber tracks, solid tires
 - Please Note: Tire Retailers, Scrap/Salvage, Yards, and Recycling Businesses are Prohibited from Participating in
 - Mercer Co, in Partnership with KY Division of Waste Management is sponsoring this event. Please take advantage of this opportunity to properly dispose of any unwanted tires. Any KY resident is eligible to participate in this program, with the exception of tire retailers, scrap/salvage yards or recycling facilities.
- FOR QUESTIONS CONTACT: 859-734-6340**



Harvesting Drought-Stressed Soybeans for Hay

With much of the country affected by the drought conditions this summer, many grain producers are facing the problem of low grain yields while many livestock producers are experiencing hay shortages and may be seeking alternatives for winter feed. One possible option is to harvest drought-damaged crops or crop residues that are not usually used as forage for hay or silage. In Kentucky, drought-stressed soybean crops with low producing grain yields may produce a substantial yield of high quality forage. If harvested in a leafy stage before the leaves start to yellow, soybean hay averages 12-15% protein and 55-60% TDN. Many factors should be taken into consideration before deciding to harvest drought-stressed soybeans for forage. It is important to consider the value of the soybean grain yield versus the forage yield. Understand the feeding quality and nutritive value along with current livestock needs. Pesticides that have been applied to the crop can negatively affect animals. Certain pesticides have no restrictions while others have recommended waiting periods after the last application for safe feeding, and others make the crop unsafe for forage use after any application. Be sure to read pesticide labels before deciding to harvest soybeans crops for forage. Last, soybeans may cause bloat. Mixing rations with grass hay or stockpiled pastures will reduce this risk. It's very dicey though to get soybean hay put up without losing leaves. Under perfect conditions and care with raking it can be done but **it's much safer to make baleage**. It's important to cut with a mower conditioner to break the large soybean stems. Farmers should make sure to have their insurance adjuster inspect the field first. Here's the link to the pub. "Utilizing Drought-stressed Soybeans for Forage"

<http://www2.ca.uky.edu/agcomm/pubs/AGR/AGR262/AGR262.pdf>

Here are the Key Points in the Publication:

- Consult crop insurance and USDA Farm Service Agency before grazing or harvesting.
- Estimate grain value prior to grazing or harvest.
- Determine harvest restrictions for the herbicides used.
- Harvest before leaves yellow and fall off.
- Mow early in the day to maximize wilting time.
- Use a mower-conditioner adjusted to the widest possible swath to crush stems.

Grazing Considerations

- Never turn hungry animals into soybeans.
- Provide access to a palatable dry hay or silage.
- Use feed additives to reduce chances of bloat.
- Strip graze soybeans to increase utilization rate.

Baleage Considerations (preferred baling option)

- Wilt to 55 to 65 percent moisture.
- Use at least 6 layers of high-quality UV resistant silage film.
- Wrap bales same day as baling.

Dry Hay Considerations

- Do not rake if moisture is below 40 percent.
- Do not ted soybean hay.
- Bale at 16 to 18 percent moisture.
- If hay becomes too dry, wait to bale. • Store bales under cover.

Feeding Considerations

- Provide access to clean water and free choice mineral.
- Feed in a hay ring to minimize feeding losses.
- Only put out enough baleage for two to three days.
- If high in grain, limit to one-half of dry mate intake.
- Avoid feeding raw soybeans in diets containing urea.

